



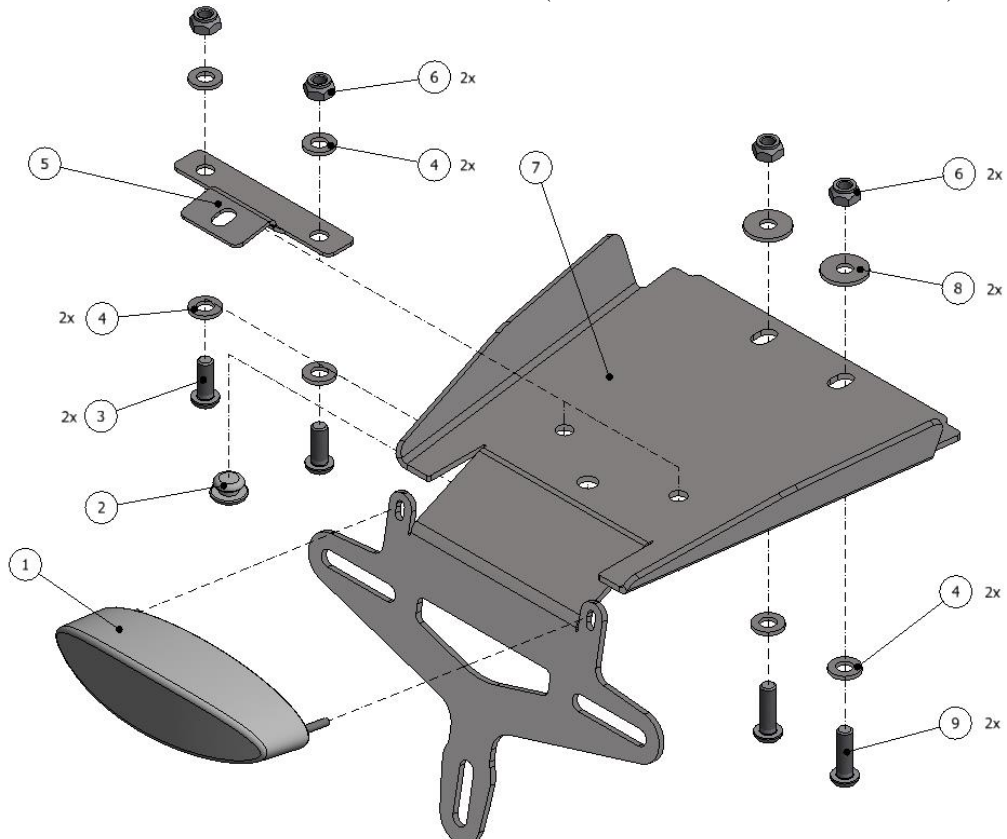
**FITTING INSTRUCTIONS FOR LP0218BK LICENCE PLATE BRACKET**  
**SINNIS BLADE 125 '14-**

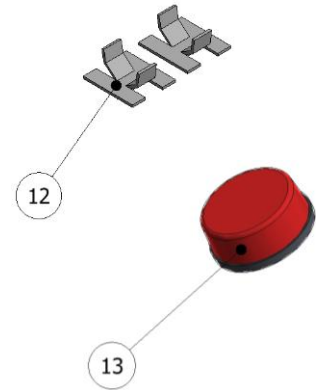
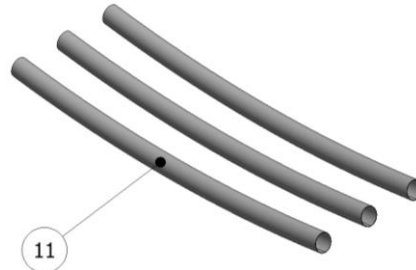
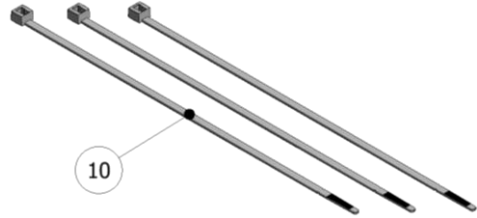


**THIS KIT CONTAINS THE ITEMS PICTURED AND LABELLED BELOW.**  
**DO NOT PROCEED UNTIL YOU ARE SURE ALL PARTS ARE PRESENT.**

Please note that the way the kit is packed does not necessarily represent the way of mounting to the bike.

THE PARTS SHOWN MAY BE REPRESENTATIVE ONLY (FOR CLARITY OF INSTRUCTIONS ONLY).





**LEGEND**

- ITEM 1 = R&G TAIL LIGHT (LA0003) (x1).
- ITEM 2 = RUBBER BUNG (RB-80-30-00) (x1).
- ITEM 3 = M6 x 16mm LONG BUTTON HEAD BOLTS (x2)
- ITEM 4 = M6 x 12mm OD WASHERS (x6).
- ITEM 5 = BODYWORK MOUNT (TB0218 Part 2) (x1).
- ITEM 6 = M6 NYLOC NUTS (x4).
- ITEM 7 = LICENCE PLATE BRACKET (TB0218 Part 1) (x1).
- ITEM 8 = M6 x 18mm OD WASHERS (x2).
- ITEM 9 = M6 x 20mm LONG BUTTON HEAD BOLTS (x2)
- ITEM 10 = 2.5mm CABLE TIES (x3).
- ITEM 11 = 150mm LENGTH OF HEATSHRINK (x3).
- ITEM 12 = SELF-ADHESIVE CABLE CLIPS (x2).
- ITEM 13 = REFLECTOR (x1).
- ITEM 14 = BULLET CONNECTOR (CON0004) (x2).

Please note that in cases where kits are packed with rubber washers holding the components onto the bolt – *the rubber washers should be thrown away!*

**TOOLS REQUIRED**

- 4mm Allen keys.
- 6, 10 & 12mm spanners and sockets.
- Phillips screwdriver.
- Cable cutters.

**MAXIMUM TORQUE SETTINGS**

- M4 Bolt = 8 Nm
- M5 Bolt = 12 Nm
- M6 Bolt = 15 Nm
- M8 Bolt = 20 Nm



Picture 1



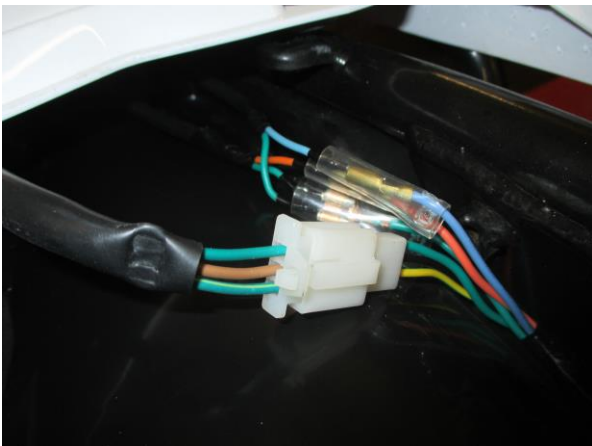
Picture 2



Picture 3



Picture 4



Picture 5



Picture 6



Picture 7



Picture 8



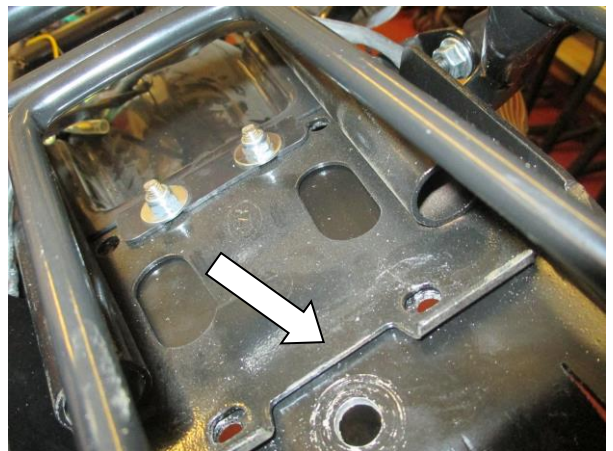
Picture 9



Picture 10



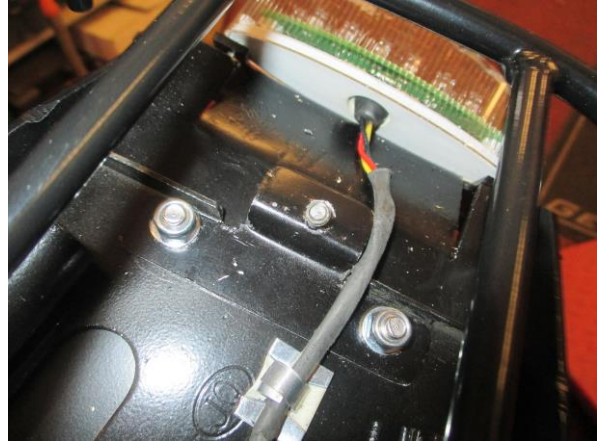
Picture 11



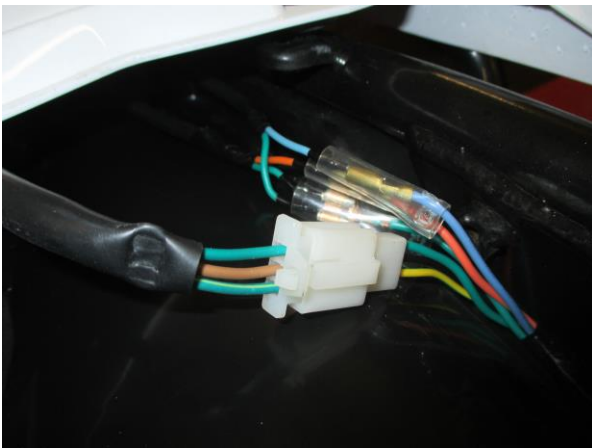
Picture 12



Picture 13



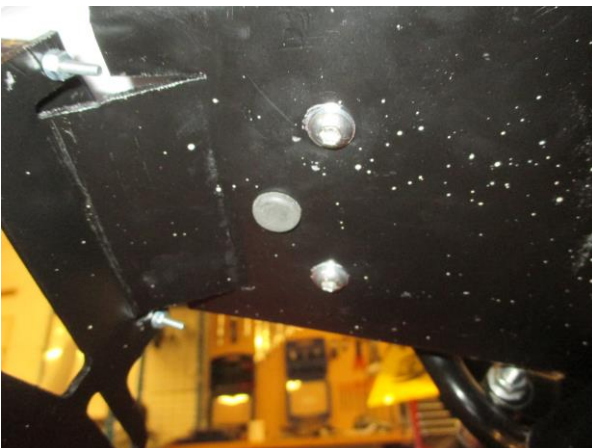
Picture 14



Picture 15



Picture 16



Picture 17



Picture 18



Picture 19



Picture 20

### **FITTING INSTRUCTIONS**

- Remove the bolt that secures the riders seat in place on both sides of the bike. The right side bolt is shown in picture 1.
- Remove the riders seat by lifting from the rear, as shown in picture 2.
- Remove the two bolts that secure the top of the rear bodywork in place, as shown in picture 3.
- Remove the four nuts on the underside of the tail unit, as shown in picture 4.
- Disconnect the tail light connector, as shown in picture 5.
- The OEM licence plate hanger can now be removed from the underside of the bike.
- Remove the Phillips headed bolt that secures the bracket to the rear bodywork, as shown in picture 6.
- The rear bodywork can now be removed from the bike, along with the metal bracket that is used to fix this in position at the rear, as shown in picture 7.
- If planning to use R&G mini indicators, it is advisable to fit these now. Simply disconnect and remove the OEM indicators and use the same mounting hole to fit the R&G mini indicator stalk, before tightening the nut on the reverse side, as shown in picture 8.
- If fitting R&G Aero Indicators with LED's, the yellow wire on the Aero Indicators connects with the blue or orange wire on the OEM loom and the black wire on the Aero Indicators connects with the green wire on the loom. No resistors are required.
- If fitting R&G Mini Indicators with bulbs, the black/white wire on the Mini Indicators connects with the green wire on the OEM loom and the black wire on the Mini Indicators connects with the blue or orange wire on the loom. No resistors are required.
- If fitting R&G Mini Indicators with LED's, the black/white wire on the Mini Indicators connects with the blue or orange wire on the OEM loom and the black wire on the Mini Indicators connects with the green wire on the loom. No resistors are required.
- Check for the correct operation of all lights at this stage.
- Tuck the wiring neatly to one side using cable ties/cable clips.
- Take the R&G licence plate bracket (item 7 – TB0218 Part 1) and offer up to the underside of the subframe, positioning the two M6 x 20mm long button head bolts (item 9) with two M6 washers (item 4) through the front mounting holes of the bracket, so that these align with the two holes on the subframe. Fit one of the larger diameter M6 washers (item 8) and one M6 nyloc nut (item 6) to the exposed thread on both bolts, before loosely tightening to hold the licence plate bracket in place, as shown in pictures 9 & 10.

R&G Racing

Unit 1, Shelley's Lane, East Worldham, Alton, Hampshire, GU34 3AQ

Tel: +44 (0)1420 89007 Fax: +44 (0)1420 87301 [www.rg-racing.com](http://www.rg-racing.com) Email: [info@rg-racing.com](mailto:info@rg-racing.com)



- Take the bodywork mount (item 5 – TB0218 Part 2) along with the OEM bolt that was used with the OEM bodywork bracket, and offer into place on the rear subframe, as shown in pictures 11 & 12, ensuring the OEM bolt is located through the hole and facing upwards, as shown in picture 13.
- Fit the two M6 x 16mm long button head bolts (item 3) with two M6 washers (item 4) through the two rearward mounting holes on the licence plate bracket from underneath the tail, then through the subframe and finally through the mounting holes on the bodywork mount, before fitting the two remaining M6 washers (item 4) and M6 nyloc nuts (item 6) to the exposed ends of threads and loosely tighten, as shown in picture 14.
- Ensure the licence plate bracket is correctly fitted before tightening all four nuts and bolts.
- Fit the heatshrink to the wiring on the tail light and then connect the female bullet connectors supplied (item 14 – CON0004) to the three wires on the R&G tail light.
- Fit the R&G Tail Light (item 1 – LA0003) to the licence plate bracket and tighten the two nuts on the rear to secure in place, before using the self-adhesive cable clips supplied (item 12) to neatly route the wiring, as shown in picture 14.
- To connect the LA003 to the wiring loom, the original wiring needs to be 'cut & shut'. To do this, cut the wiring connector off the OEM tail light along with roughly 100mm of wiring. Fit the remaining three male bullet connectors supplied to the three wires before fitting these to the bullet connectors already fitted to the LA0003 light. Connect OEM green to LA0003 black, OEM black to LA0003 yellow and OEM yellow/green to LA0003 red. Then connect the large connector to the one on the bike before checking for the correct operation of all lights, as shown in picture 15.
- Re-fit the OEM bodywork that sits on top of the tail unit, ensuring the previously positioned OEM bolt aligns with the threaded boss in the plastic bodywork. Access this using a Phillips screwdriver through the hole on the licence plate bracket from below and tighten, as shown in picture 16.
- Fit the rubber bung supplied (item 2 – RB-80-30-00) to fill the hole in the licence plate bracket, as shown in picture 17.
- Re-fit the two OEM bolts on top of the tail unit, as shown in picture 18.
- Re-fit the seat along with the two bolts on the side panels, as shown in picture 19.
- Ensure the tail tidy is securely mounted.
- Check that all wiring is neatly routed on the underside of the tail tidy.
- Re-fit the licence plate (it may require drilling).
- Depending on local laws, attach enclosed reflector in an appropriate location.
- Test the licence plate illuminator and all lights before riding.

ISSUE 1 04/04/2017 (AR)

**Digital copies of these instructions are available to download from [www.rg-racing.com](http://www.rg-racing.com)**

#### CONSUMER NOTICE

The catalogue description and any exhibition of samples are only broad indications of the Products and R&G may make design changes which do not diminish their performance or visual appeal and supplying them in such state shall conform to the order. The Buyer acknowledges no representation or warranty (other than as to title) has been given or will apply to the Products other than those in R&G's order or confirmation and the Buyer confirms it has chosen the Products as being of merchantable quality and suitable for its particular purposes. Where R&G fits the Products or undertakes other services it shall exercise reasonable skill and care and rectify any fault free of charge unless the workmanship has been disturbed. The Buyer is responsible for ensuring that the warranty on the motorcycle is not affected by the fitting of the Products. On return of any defective Products R&G shall at its option either supply a replacement or refund the purchase money but shall not be liable if the Products have been modified or used or maintained otherwise than in accordance with R&G's or manufacturer's instructions and good engineering practice or if the defect arises from accident or neglect. Other than identified above and subject to R&G not limiting its liability for causing death and personal injury, it shall not be liable for indirect or consequential loss and otherwise its liability shall be limited to the amounts paid by the Buyer for the Products or the fitting or service concerned. These terms do not affect the Buyer's statutory rights.

#### R&G RACING RETURNS POLICY (NON-FAULTY GOODS)

Returns must be pre-authorised (if not pre-authorised the return will be rejected). Goods may only be returned direct to us if they were purchased direct from us (customer must prove if necessary). Otherwise to be returned to original vendor. Goods must be in re-sellable condition, in the opinion of R&G Racing. All returns are subject to a 25% restocking and handling fee (25% of the gross value exc. P&P – at the prevailing price at time of purchase). The customer must pay any and all carriage charges. No returns of discontinued products, unless within 14 days of purchase. This policy does not affect your statutory rights and does not refer to faulty goods.

R&G Racing

Unit 1, Shelley's Lane, East Worldham, Alton, Hampshire, GU34 3AQ

Tel: +44 (0)1420 89007 Fax: +44 (0)1420 87301 [www.rg-racing.com](http://www.rg-racing.com) Email: [info@rg-racing.com](mailto:info@rg-racing.com)



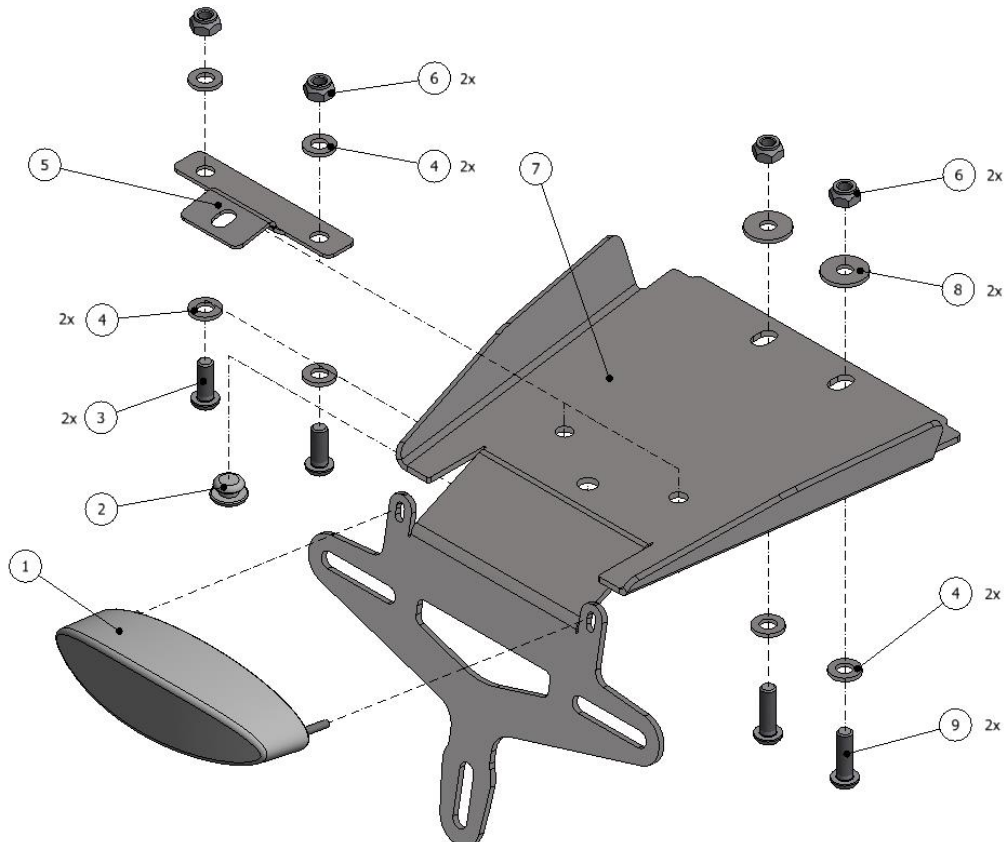
**NOTICE DE MONTAGE POUR LP0218BK SUPPORT DE PLAQUE  
SINNIS BLADE 125 '14-**



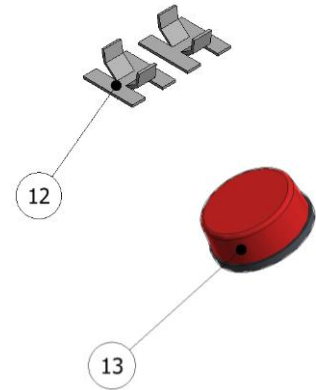
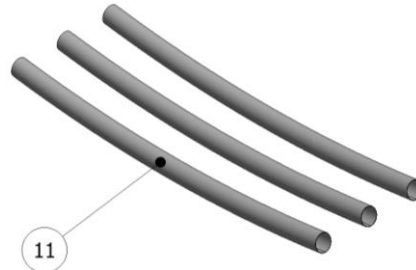
**Assurez vous que toutes les pièces soient présentes avant de procéder au montage.**

**La façon dont le kit est emballé ne correspond pas forcément à la façon de monter les pièces sur la moto.**

**Les pièces présentées peuvent n'être que représentatives, afin de faciliter et clarifier les instructions de montage.**







### **LEGENDE**

- ARTICLE 1 = R&G SUPPORT DE FEU (LA0003) (x1).
- ARTICLE 2 = ŒILLET EN CAOUTCHOUC (RB-80-30-00) (x1).
- ARTICLE 3 = M6 x 16mm BOULONS (x2)
- ARTICLE 4 = M6 x 12mm OD RONDELLES (x6).
- ARTICLE 5 = SUPPORT DE CARENAGE (TB0218 Part 2) (x1).
- ARTICLE 6 = M6 ECROUS (x4).
- ARTICLE 7 = SUPPORT DE PLAQUE (TB0218 Part 1) (x1).
- ARTICLE 8 = M6 x 18mm OD RONDELLES (x2).
- ARTICLE 9 = M6 x 20mm BOULONS (x2)
- ARTICLE 10 = 2.5mm COLLIERS DE SERRAGE (x3).
- ARTICLE 11 = 150mm LONGUEUR DE THERMO RETRACTABLE (x3).
- ARTICLE 12 = CLIPS AUTOCOLLANTS (x2).
- ARTICLE 13 = REFLECTEUR (x1).
- ARTICLE 14 = CONNECTEUR (CON0004) (x2).

Notez que si les kits sont emballés avec des rondelles en caoutchouc servant à tenir les composants, *ces rondelles doivent être jetées!*

### **OUTILS REQUIS**

- Clés Allen 4mm.
- Clé à cliquet + douilles 6, 10 & 12mm.
- Tournevis cruciforme.
- Pince coupe câble

### **COUPLES DE SERRAGE RECOMMANDES**

- M4 BOULON = 8Nm
- M5 BOULON = 12Nm
- M6 BOULON = 15Nm
- M8 BOULON = 20Nm



Photo 1



Photo 2



Photo 3



Photo 4

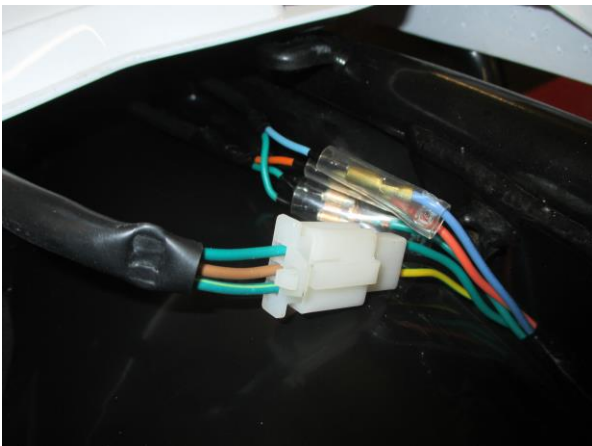


Photo 5



Photo 6



Photo 7



Photo 8



Photo 9



Photo 10



Photo 11

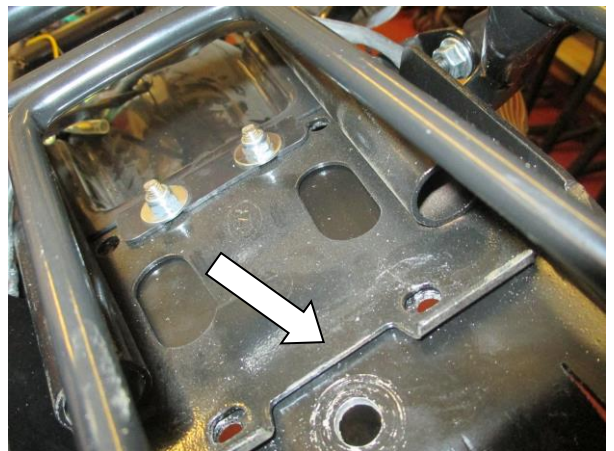


Photo 12



Photo 13

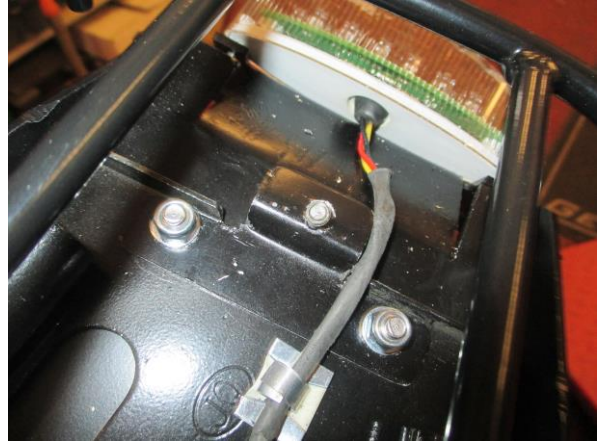


Photo 14

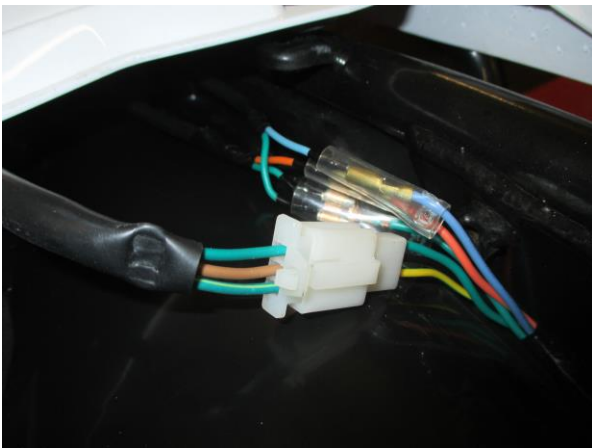


Photo 15



Photo 16

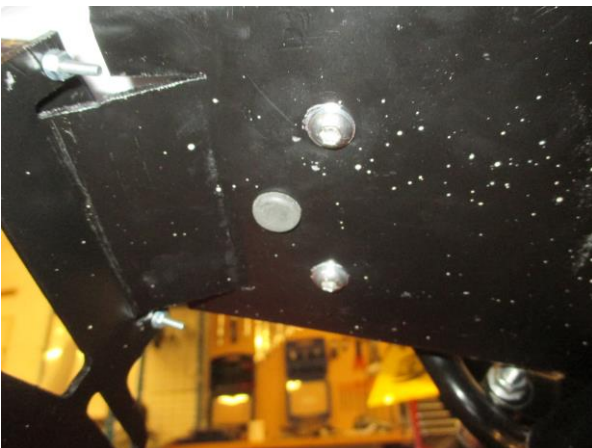


Photo 17



Photo 18



Photo 19



Photo 20

### NOTICE DE MONTAGE

- Enlever le boulon qui fixe les sièges de passager en place des 2 cotés de la moto. Le boulon du coté droit est indiqué sur la photo 1.
- Enlever le siège de pilote en le levant par l'arrière, voir photo 2.
- Enlever les 2 boulons qui fixent le haut du carénage arrière en place, voir photo 3.
- Enlever les 4 écrous au dessous de l'unité de support de plaque, voir photo 4.
- Déconnecter le connecteur de feu de plaque, voir photo 5.
- Le support de plaque d'origine peut maintenant être enlevé du dessous de la moto.
- Enlever les boulons qui fixent le support au carénage arrière, voir photo 6.
- Le carénage arrière peut maintenant être enlevé de la moto, avec le support métallique utilisé pour le fixer en position à l'arrière, voir photo 7.
- Si vous prévoyez d'utiliser les minis clignotants R&G, il est conseillé de les monter maintenant. Déconnectez simplement et enlevez les clignotants d'origine puis utiliser le même trou de fixation pour monter la tige de mini clignotant R&G, avant de serrer l'écrou par le coté opposé, voir photo 8.
- Si vous montez les clignotants latéraux R&G à LED, le fil jaune sur les clignotants latéraux se connecte avec le bleu ou l'orange sur le faisceau d'origine et le fil noir sur les clignotants latéraux avec le vert sur le faisceau. Aucune résistance requise.
- Si vous montez les minis clignotants R&G à ampoule, le fil noir/blanc sur les minis clignotants se connecte avec le fil vert sur le faisceau d'origine et le fil noir sur les minis clignotants se connecte avec le bleu ou l'orange sur le faisceau. Aucune résistance requise.
- Si vous montez les minis clignotants R&G à LED, le fil noir/blanc sur les mini clignotants se connecte avec le bleu ou l'orange sur le faisceau d'origine et le fil noir sur les mini clignotants se connecter avec le fil vert sur le faisceau. Aucune résistance requise.
- Vérifier que tous les feux fonctionnent.
- Ranger les fils ensemble d'un coté en vous servant des colliers de serrage/clips câble.
- Prendre le support de plaque R&G (article 7 – TB0218 Partie 1) et montez le au dessous du sous-cadre, en positionnant les 2 boulons M6 x 20mm (article 9) avec 2 rondelles M6 (article 4) dans les trous de support de fixation avant, de façon à ce qu'ils s'alignent avec les 2 trous du sous-cadre. Insérer une des rondelles M6 (article 8) et un écrou M6 (article 6) sur l'extrémité du filetage sur les 2 boulons, avant de serrer légèrement pour maintenir le support de fixation en place, voir photos 9 & 10.

R&G Racing

Unit 1, Shelley's Lane, East Worldham, Alton, Hampshire, GU34 3AQ

Tel: +44 (0)1420 89007 Fax: +44 (0)1420 87301 [www.rg-racing.com](http://www.rg-racing.com) Email: [info@rg-racing.com](mailto:info@rg-racing.com)



- Prendre le support de carénage (article 5 – TB0218 Partie 2) avec le boulon d'origine utilisé avec le support de carénage d'origine, puis montez le en place sur le sous-cadre arrière, voir photos 11 & 12, en veillant à ce que le boulon d'origine soit placé dans le trou et orienté vers le haut, voir photo 13.
- Insérer les 2 boulons M6 x 16mm (article 3) avec 2 rondelles M6 (article 4) dans les 2 trous de fixation reculés sur le support de plaque au dessous du support, puis dans le sous-cadre et enfin dans les trous de fixation du support de carénage, avant d'insérer les 2 rondelles M6 restantes (article 4) et écrous M6 (article 6) sur les extrémités des filetages puis serrer légèrement, voir photo 14.
- Veiller à ce que le support de plaque soit correctement monté avant de serrer les 4 écrous et boulons.
- Appliquer la thermo rétractable sur les fils du feu de plaque puis connecter les connecteurs femelle fournis (article 14 – CON0004) sur les 3 fils sur le feu de plaque R&G.
- Monter le feu de plaque R&G (article 1 – LA0003) sur le support de plaque puis serrer les 2 écrous à l'arrière pour fixer la position, avant d'utiliser les clips câbles autocollants fournis (article 12) pour ranger proprement les fils, voir photo 14.
- Pour connecter le LA003 au faisceau de câbles, le fil d'origine doit être « coupé » puis « fermé ». Pour cela, , couper le connecteur de fil du feu de plaque d'origine en laissant environ 100mm de fil. Monter les 3 connecteurs mâles restant fournis sur les 3 fils avant de les monter sur les connecteurs déjà montés sur le feu LA0003. Connecter le connecteur vert d'origine au connecteur noir LA0003, le noir d'origine au jaune LA0003 et le jaune/vert d'origine au rouge LA0003. Enfin, connecter le connecteur large à celui de la moto avant de vérifier que tous les feux fonctionnent, voir photo 15.
- Remonter le carénage d'origine qui se place sur le haut de l'unité de support de plaque, en veillant à ce que le boulon d'origine précédemment inséré s'aligne avec le patron fileté du carénage en plastique. Accédez à l'aide d'un tournevis cruciforme dans le trou du support e plaque par le dessous, puis serrer, voir photo 16.
- Placer l'œillet en caoutchouc fourni (article 2 – RB-80-30-00) pour boucher le trou du support de plaque, voir photo 17.
- Réinsérer les 2 boulons d'origine sur le haut de l'unité de support de plaque, voir photo 18.
- Remonter le siège avec les 2 boulons sur les panneaux latéraux, voir photo 19.
- Vérifier que le support de plaque soit correctement monté.
- Vérifier que tous les fils soient correctement rangés au dessous du support de plaque.
- Remontez la plaque d'immatriculation (Peut nécessiter un perçage).
- Selon les lois locales, attacher les réflecteurs aux endroits appropriés.
- Vérifiez que les clignotants et les feux de plaque fonctionnent bien avant de prendre la route.

ISSUE 1 04/04/2017 (AR)

**Notice disponible au téléchargement sur [www.rg-racing.com](http://www.rg-racing.com)**

#### CONSUMER NOTICE

The catalogue description and any exhibition of samples are only broad indications of the Products and R&G may make design changes which do not diminish their performance or visual appeal and supplying them in such state shall conform to the order. The Buyer acknowledges no representation or warranty (other than as to title) has been given or will apply to the Products other than those in R&G's order or confirmation and the Buyer confirms it has chosen the Products as being of merchantable quality and suitable for its particular purposes. Where R&G fits the Products or undertakes other services it shall exercise reasonable skill and care and rectify any fault free of charge unless the workmanship has been disturbed. The Buyer is responsible for ensuring that the warranty on the motorcycle is not affected by the fitting of the Products. On return of any defective Products R&G shall at its option either supply a replacement or refund the purchase money but shall not be liable if the Products have been modified or used or maintained otherwise than in accordance with R&G's or manufacturer's instructions and good engineering practice or if the defect arises from accident or neglect. Other than identified above and subject to R&G not limiting its liability for causing death and personal injury, it shall not be liable for indirect or consequential loss and otherwise its liability shall be limited to the amounts paid by the Buyer for the Products or the fitting or service concerned. These terms do not affect the Buyer's statutory rights.

#### R&G RACING RETURNS POLICY (NON-FAULTY GOODS)

Returns must be pre-authorized (if not pre-authorized the return will be rejected). Goods may only be returned direct to us if they were purchased direct from us (customer must prove if necessary). Otherwise to be returned to original vendor. Goods must be in re-sellable condition, in the opinion of R&G Racing. All returns are subject to a 25% restocking and handling fee (25% of the gross value exc. P&P – at the prevailing price at time of purchase). The customer must pay any and all carriage charges. No returns of discontinued products, unless within 14 days of purchase. This policy does not affect your statutory rights and does not refer to faulty goods.

R&G Racing

Unit 1, Shelley's Lane, East Worldham, Alton, Hampshire, GU34 3AQ

Tel: +44 (0)1420 89007 Fax: +44 (0)1420 87301 [www.rg-racing.com](http://www.rg-racing.com) Email: [info@rg-racing.com](mailto:info@rg-racing.com)